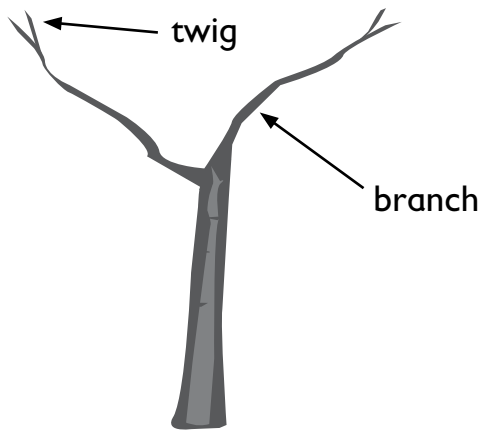
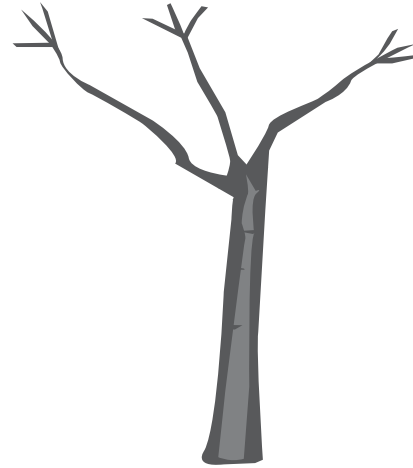


Trees



Two-trees have 2 branches.
Each branch has 2 twigs.
4 twigs altogether.



Three-trees have 3 branches.
Each branch has 3 twigs.
9 twigs altogether.

Draw a **four-tree** with 4 branches.
Each branch has 4 twigs.
How many twigs altogether?

Draw a **five-tree** with 5 branches.
How many twigs on each branch?
How many twigs altogether?

Here's a hard question!
What kind of tree has 49 twigs?